

transform

your expectations



commercial doors





collaboration



A New Perspective

Opening up new possibilities and pushing the limits are easy with Clopay's diverse line of commercial doors. You'll have an award-winning selection to choose from that can help you redefine how others see your building.



on every level



When you choose Clopay for your commercial doors, you'll have access to a network of dealers who are ready to provide one-on-one collaboration. You'll work directly with a commercial door expert who will take the time to show you inspiring choices and help you reinvent your space with creative options. Whether your goal is to improve energy efficiency, let in more light or transform your space for a new application, Clopay will help you find the perfect solution on your terms.



Model 3720, Interior Shown with 24" x 8" Lights
and 14 Gauge Hinges

Commercial-Grade Tools

Clopay collaborates with popular online resources to provide architects, specifiers, building owners and contractors the tools needed to properly specify commercial products and learn about LEED credits. Clopay offers Continuing Education with AIA certified courses on topics including wind load, fire doors and sectional door basics.

Need help with a specification?

Visit clopaycommercial.com or architectdoorhelp.com

Specification Tools



Building Information Management





explore your choices

Clopay offers a diverse selection of commercial doors that are uniquely suited to meet a wide array of specifications. Whether your primary need is durability, energy efficiency or versatility, Clopay has a door that will help you transform your space.



	ARCHITECTURAL SERIES Aluminum Full-View Doors	ARCHITECTURAL SERIES Steel Full-View Doors	ENERGY SERIES WITH INTELICORE Polyurethane Insulated Steel Doors	ENERGY SERIES Polystyrene Insulated Steel Doors	INDUSTRIAL SERIES Ribbed Steel Doors	ROLLING STEEL SERIES Rolling Steel Doors	STACKING SERIES VertiStack® Compact Vertical Stacking Sections	EXTREME™ SERIES High Performance Sectional Door System
EASE OF OPERATION	★★★★★	★★★★★	★★★★★	★★★★★	★★★★★	★★★	★★★★★	★★★★★
APPEARANCE/DESIGN	★★★★★	★★★★★	★★★★	★★★★	★★★	★★	★★★★★	★★★★★
DURABILITY	★★★★★	★★★★★	★★★★★	★★★★	★★★	★★★★★	★★★	★★★★★
COST OF OWNERSHIP	\$\$\$	\$\$	\$\$	\$\$	\$\$\$	\$	\$\$\$	\$\$
ENERGY EFFICIENCY	★★	★★★★	★★★★★	★★★★	★★★	★★	★★	★★★
INITIAL COST	\$\$\$\$	\$\$\$\$	\$\$\$	\$\$	\$\$	\$\$\$\$\$	\$\$\$\$	\$\$\$\$

architectural series



ALUMINUM FULL-VIEW DOORS

Clopay's Aluminum Full-View doors offer flexibility to allow varying degrees of light while complementing the surrounding structure. A wide selection of standard and custom glazing types and finishes make a bold statement in retail, service stations, restaurants and other environments requiring visibility or light.

MAXIMUM DURABILITY

- 2-1/8" (54 mm) thick section construction, 6063-T5 extruded aluminum alloy frame. Interior reinforcing fin standard on Model 904/904U where necessary.
- Tongue-and-groove meeting rail.
- Model 904/904U features contemporary boxed frame design with integral section joint seal.
- Model 904U features Intellicore® polyurethane insulated rails and stiles. R-value 3.8/U-factor 0.73 when glazed with insulated Low E Argon filled glass.

VERSATILITY AND DESIGN FLEXIBILITY

- Numerous glazing options include insulated, Low-E, frosted, mirrored, tinted and polycarbonate panels in various colors. Most glass types include tempered option.
- Wide variety of anodized, powder-coated and painted options, including Color Blast® Finish.
- 904U/904 has consistent panel widths and heights.

Calculated door section R-value is in accordance with DASMA 125-163.
Tested door U-Factor is in accordance with DASMA 105.

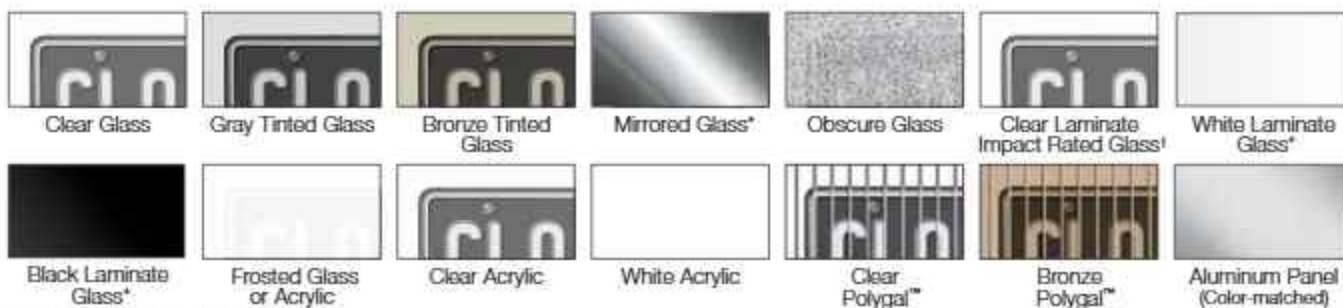


PANEL OPTIONS





GLASS/PANEL OPTIONS



* Mirrored and laminate not available in 1/2".

† 5/16" clear laminate impact rated glass is available only on 904WB/904LWB.

‡ Glass thickness available in 1/8", 1/4" and 1/2". Low-E available on insulated glass. III-Web polygal thickness available in 5/8".

Aluminum panels can be color matched to frame. Glass/acrylic panels may be combined with aluminum panels.

Acrylic windows require special cleaning. Never use products that contain ammonia or petroleum products to clean acrylic.

Please visit clayco.com/acrylic for complete details.

FRAME/SOLID PANEL COLOR OPTIONS



**Additional cost may apply.

†† Due to the anodizing process, slight color variation may occur. The use of "Bronze (Painted)" is recommended for a more consistent bronze finish color.

‡ Custom powder coat and Color Blast® finish available. See your Clayco Dealer for details. Model 904U is not available with powder coat finish.

architectural series



Model 906U, Black Anodized Doors, Screen with Tempered Mirrored Glass

ALUMINUM FULL-VIEW DOORS

Clopay Models 905 and 906 are now available with a sleek panel design offering fewer lines and angles. The proportional rail and stile profiles, along with equal spacing, provide an aesthetically pleasing appearance. This sleek door is ideal in applications such as restaurants, auto dealerships and fire stations.

MAXIMUM DURABILITY

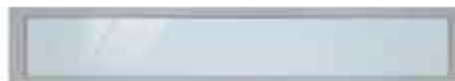
- 2-1/8" (54 mm) thick section construction, 6063-T5 extruded aluminum alloy frame. Interior reinforcing fin standard where necessary.
- Tongue-and-groove meeting rail.
- Models 905/905U/906/906U feature contemporary boxed frame design with integral section joint seal.
- Models 905U/906U feature Intellicore[®] polyurethane insulated rails and stiles.

VERSATILITY AND DESIGN FLEXIBILITY

- Glass types available include, acrylic, tempered and insulated tempered glass. Glazing options available in low E, frosted, mirrored and various colors.
- Wide variety of anodized, powder-coated and painted options, including Color Blast[®] Finish.
- 905/906 offers fewer stiles, creating a modern full-view aesthetic.



PANEL OPTION



Aluminum Full-View



PANEL CONFIGURATIONS

MODELS 905 AND 905U – 7'6" TO 8'5" HIGH DOORS



Up to 10'2" Wide
1 Panel



10'3" to 20'2" Wide
2 Panel



20'3" to 22'2" Wide
3 Panel

MODELS 906 AND 906U – 7'6" TO 8'5" HIGH DOORS



Up to 9'0" Wide
1 Panel



9'1" to 17'2" Wide
2 Panel



17'3" to 22'2" Wide
3 Panel

905/905U GLASS OPTIONS



Clear Acrylic



White Acrylic



Frosted
Tempered Acrylic

906/906U GLASS OPTIONS



Clear Tempered
Glass



Gray Tinted
Tempered Glass



Bronze Tinted
Tempered Glass



Tempered
Mirrored Glass*



Clear Laminated
Glass



White Laminated
Glass



Gray Laminated
Glass



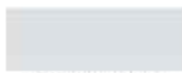
Bronze Laminated
Glass



Black Laminated
Glass

*Mirrored glass not available in 1/2".
Glass thickness available in 1/8", 1/4" and 1/2".
Low-E available on insulated glass.
Acrylic windows require special cleaning. Never use
products that contain ammonia or petroleum products
to clean acrylic. Please visit clipartdoor.com/acrylic
for complete details.

COLOR OPTIONS



Clear Aluminum
(Anodized)



Standard White
(Painted)



Bronze (Painted)



Chocolate
(Painted)



Bronze
(Anodized)**



Black
(Anodized)**



Dark Bronze
(Anodized)**

**Additional cost may apply.

†Due to the anodizing process, slight color variation may occur. The use of "Bronze (Painted)" is recommended for a more consistent bronze finish color. Custom powder coat and Color Blast® finish available. See your Clipart Dealer for details. Models 905U/906U are not available with powder coat finish.

architectural series

STEEL FULL-VIEW DOORS

Clopay's Steel Full-View doors are durable, energy efficient and offer excellent visibility and design options. These doors are a perfect fit for commercial, retail, restaurant and industrial facilities where ease of maintenance, versatility, energy efficiency and durability considerations are all important.

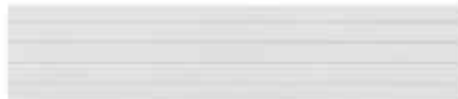
MAXIMUM DURABILITY AND ENERGY EFFICIENCY

- Three-layer construction with thermal break section joints.
- 2" (50.8 mm) or 1-3/8" (34.9 mm) thick models with Intellicore® polyurethane or polystyrene insulation bonded to the interior and exterior steel skins.
- R-values up to 18.4* (solid)/8.0* (fully glazed with clear insulated glass).
- U-Factors as low as 0.19** (solid)/0.39** (with clear insulated glass).

LOW MAINTENANCE WITH LASTING FINISH

- Hot-dipped galvanized steel skin with a baked-on primer and top coat.

EXTERIOR SKIN PATTERNS



Minor Ribbed – Stucco Embossed
(3159, 3209, 3709, 3729*)



Flush – Stucco Embossed
(3158, 3208, 3708, 3728*)

*Exterior steel surface on a Luster™ finish door has a smooth texture.

To view window glazing material options, see page 21.

VERSATILITY AND DESIGN FLEXIBILITY

- Injection-molded window frames with multiple glazing, size and visibility options.
- 37" x 8" contemporary slim window frame in black or silver aluminum. Many glass options available.
- Impact rated window options available.
- Minor ribbed or flush exterior skin.
- Variety of color options.

PEACE OF MIND

- Ten-year paint and delamination warranty†.

*R value is impacted by the number of windows and window type per section. Calculated door section R value is in accordance with DASMA 105-163. Intellicore® insulation and polystyrene insulation CFC and HCFC free.

**Insulated door U-factor is in accordance with DASMA 105

†10-year delamination warranty for Models 3159, 3158, 3209, 3208 and ten years for Models 3709, 3708, 3728, 3729.

WINDOW OPTIONS



19-1/2" x 16" – Injection Molded Frames
(3158, 3159, 3208, 3209, 3708, 3709, 3728, 3729)



42" x 16" – Injection Molded Frames
(3158, 3159, 3208, 3209, 3708, 3709, 3728, 3729)



37" x 8" – Slim Windows with Aluminum Frame
(3208, 3209, 3728, 3729)

Model 3729; Shown with 42" x 16" I Am



Model 3208; Shown with 37" x 8" I Am



energy series with intellicore

POLYURETHANE INSULATED STEEL DOORS

Clopay's polyurethane insulated steel premier doors provide increased energy savings and advanced comfort using our innovative Intellicore® insulation technology. These doors are a smart choice for climate-controlled manufacturing facilities, warehouses, schools, office spaces and retail facilities.

MAXIMUM DURABILITY AND ENERGY EFFICIENCY

- Three-layer construction with thermal break section joints.
- 3" (76.2 mm), 2" (50.8 mm) or 1-3/8" (34.9 mm) thick models with Intellicore® polyurethane insulation bonded to the interior and exterior steel skins.
- R-values up to 27.2*.
- U-Factors as low as 0.16**.
- Exterior skin gauge options include 20, 24 or 27 gauge.

LOW MAINTENANCE WITH LASTING FINISH

- Hot-dipped galvanized steel skin with a baked-on primer and top coat.

EXTERIOR SKIN PATTERNS



Minor Ribbed - Stucco Embossed
(3/15, 3/17, 3/20, 3/24, 3/30)



Flush - Stucco Embossed
(3/18, 3/22)



Flush - Woodgrain Embossed
(3/21)



Elegant Raised - Woodgrain Embossed
(3/23)

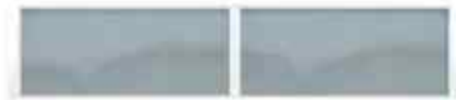
WINDOW OPTIONS



24" x 8"
(3/15, 3/17, 3/18, 3/20, 3/24, 3/30)



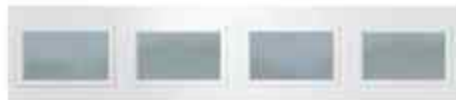
24" x 12"
(3/15, 3/17, 3/18, 3/20, 3/24, 3/30)



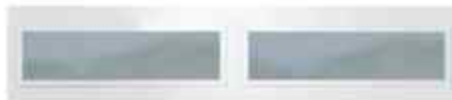
Aluminum Full-View[†]
(3/15, 3/17, 3/18, 3/20, 3/24)



26" x 13" - Double Pane Polycarbonate Glazing
(3/15, 3/17, 3/20, 3/24)



19-1/2" x 12"
(3/21, 3/23)



40-1/2" x 12"
(3/21, 3/23)

VERSATILITY AND DESIGN FLEXIBILITY

- Injection-molded window frames with multiple glazing and window sizes. Aluminum full-view sections available in clear anodized and painted standard white and chocolate.
- Glazing options include DSB, tempered, plexiglass, insulated, insulated tempered and polycarbonate.
- Multiple steel texture embossments, panel designs and window options.
- Variety of color options.

PEACE OF MIND

- Ten-year paint and delamination warranty.

*Calculated door section R-value is in accordance with DASMA 115-163. Intellicore® insulation CTC and H3-C line.

**Insulated door U-Factor is in accordance with DASMA 105.



Model 3/24; Shown with 24" x 8" Lite

[†]Intellicore polyurethane insulated option also available for Models 3/24, 3/22 and 3/20. To view window glazing material options, see page 21.



intellicore[®]
insulation technology



WARMER.
QUIETER.
STRONGER.

Commercial doors featuring Intellicore[®] insulation technology represent the ultimate smart choice. Clopay's Intellicore[®] insulation is a proprietary polyurethane foam that is injected into the door, expanding to fill the entire structure. The result is a door with incredible strength and durability. Its dense insulation also produces a quieter door, while its industry-leading R-values (up to 27.2) provide year-round comfort and improved energy efficiency.

durable and
energy efficient

POLYSTYRENE INSULATED STEEL DOORS

Clopay's Energy Series doors provide durability and enhanced comfort using our high-quality polystyrene insulation, three-layer construction and thermally broken section joints. These doors are an effective choice for industrial facilities, municipal buildings, warehouses and shipping docks under demanding conditions.

DURABILITY AND ENERGY EFFICIENCY

- Three-layer construction with thermal break section joints.
- 2" (50.8 mm) or 1-3/8" (34.9 mm) thick models with polystyrene insulation bonded to the interior and exterior steel skins.
- Exterior skin gauge options include 20, 24 or 27 gauge.
- R-values up to 9.1*.
- U-Factors as low as 0.24**.

LOW MAINTENANCE WITH LASTING FINISH

- Hot-dipped galvanized steel skin with a baked-on primer and top coat.

VERSATILITY AND DESIGN FLEXIBILITY

- Injection-molded window frames with multiple glazing and window sizes. Full-view section options in pre-painted Standard White or Chocolate available.
- Multiple steel texture embossments, panel designs and window options.
- Variety of color options.

PEACE OF MIND

- Ten-year paint and five-year delamination warranty.

*Calculated door section R-value is in accordance with ASTM 1025-163. Polystyrene DFC and HD3C free.
 **Tested door U-Factor is in accordance with ASTM 106.

EXTERIOR SKIN PATTERNS



Minor Ribbed – Stucco Embossed
(3150, 3200)



Flush – Stucco Embossed
(3220)



Flush – Woodgrain Embossed
(3155, 3211)



Elegant Raised – Woodgrain Embossed
(3154, 3213)

WINDOW OPTIONS



24" x 8"
(3150, 3200)



24" x 12"
(3150, 3200)



Aluminum Full-View¹
(3150, 3200)



19-1/2" x 12"
(3211, 3213)

Model 3150; Shown with 24" x 8" Lites



3-layer bonded polystyrene doors are 2" or 1-3/8" sandwich construction

¹ Intelliflex polyurethane insulated option also available for Models 3220 and 3200.
 To view window glazing material options, see page 21.

Model 520; Shown with 24" x 6" Lite

industrial series

RIBBED STEEL DOORS

Clopay's Industrial Series doors feature a variety of panel designs and a wide selection of steel gauges to meet your design, durability and budget requirements. These doors are a great choice for high traffic applications including industrial facilities, warehouses, distribution centers and loading docks.

DURABILITY AND ENHANCED COMFORT

- One or two-layer construction in 20, 24 and 25 gauge options.
- Two-layer models include polystyrene insulation with optional vinyl (524V, 525V and 664V) or steel back (520S, 522S, 524S and 525S).
- R-values up to 6.6* (insulated models only).
- U-Factors as low as 0.37** (insulated models only).

EASE OF MAINTENANCE WITH LONG LASTING FINISH

- Hot-dipped galvanized steel skin with a baked-on primer and top coat.

DESIGN FLEXIBILITY

- Multiple steel texture embossments and panel designs.
- Multiple window options. Full-view section options in pre-painted Standard White or Chocolate available.
- Variety of color options.

PEACE OF MIND

- Ten-year paint warranty.

*Calculated door section R value is in accordance with ASTM 1135-163.
**Tested door U-Factor is in accordance with ASTM 105.

EXTERIOR SKIN PATTERNS



Deep Ribbed – Smooth Embossed
(525, 524, 520)



Flush – Smooth Embossed
(522)



Classic Raised – Woodgrain Embossed
(664, 664V)

WINDOW OPTIONS



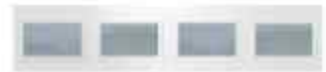
24" x 6"
(520, 522, 524, 525)



24" x 12"
(520, 522, 524, 525)



Aluminum Full-View
(520, 522, 524, 525)



19-1/2" x 12"
(664)

To view window glazing material options, see page 21.

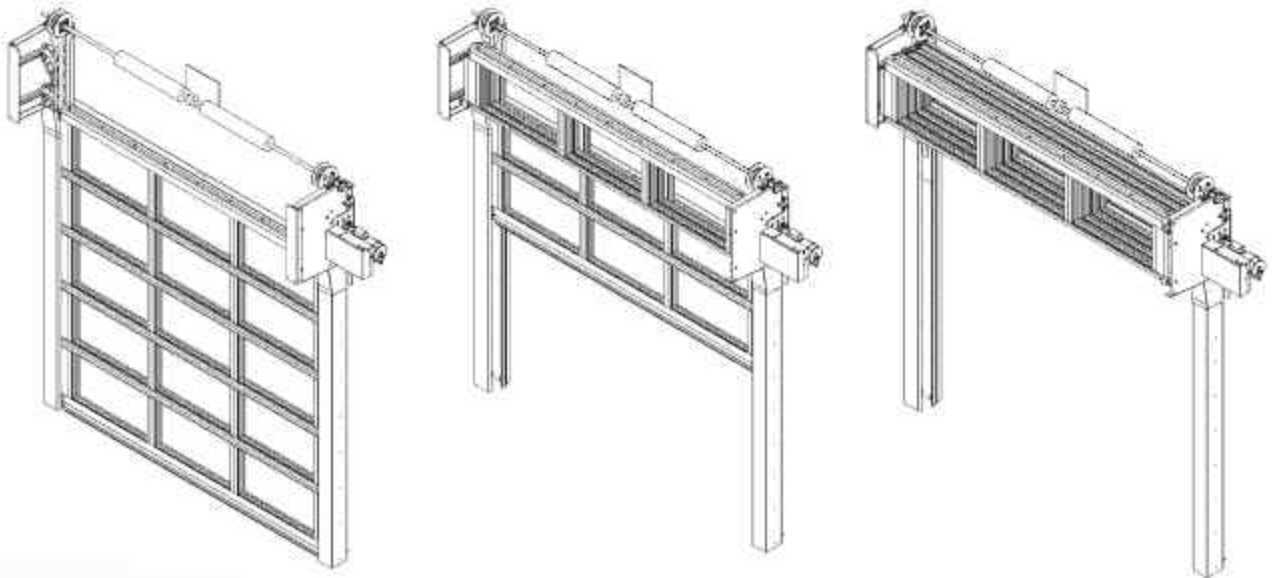
2" ribbed steel doors are available with polystyrene insulation or non-insulated

STACKING SERIES



VERTISTACK® CLEAR DOOR – MODELS VS904, VS904U

The VertiStack Clear door utilizes unique, compact stacking sections that take up minimal ceiling space, so it won't interfere with mechanical, electrical or plumbing fixtures. Vertically stacked sections with minimal projection on the wall allow for a clear and open ceiling. The sections can even be recessed into the ceiling if desired. Designed to operate smoothly and quietly, the door will not disturb patrons when operating. Model VS904U features Intellicore® polyurethane insulated rails and stiles.

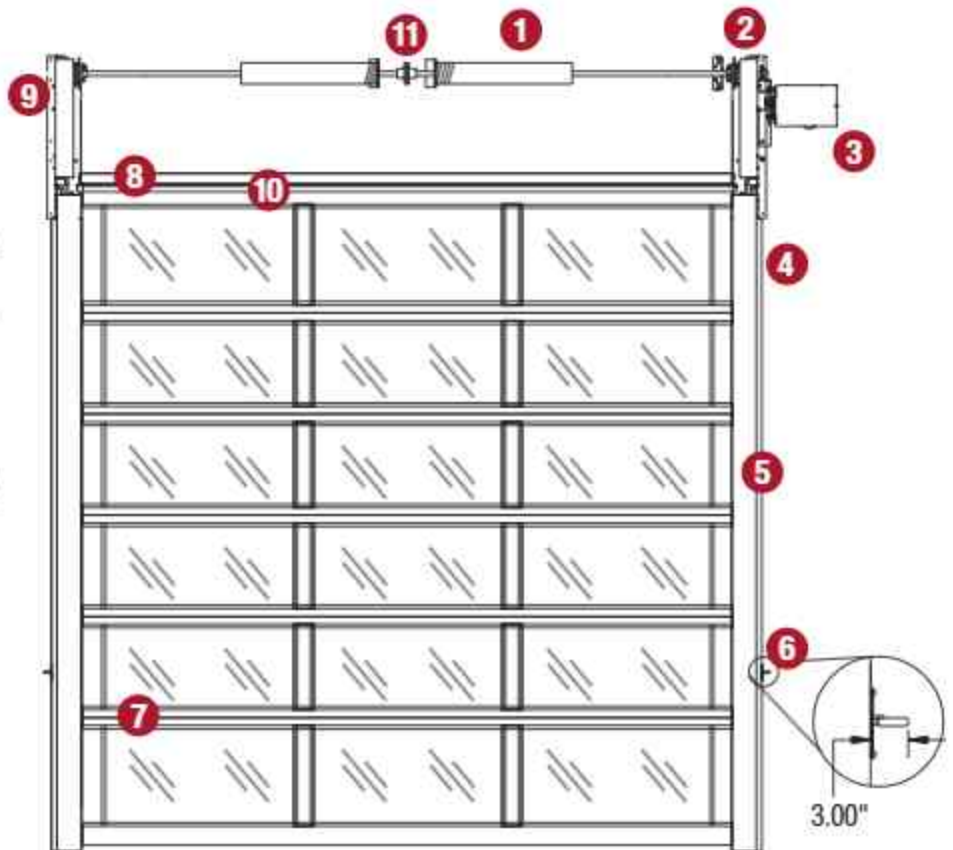


compact vertical stacking for an expanded footprint

BRINGING THE OUTSIDE IN

STANDARD COMPONENT MATERIALS AND FINISHES

1. **TORSION SPRINGS**
25,000-cycle springs
2. **STRAP SPOOL**
2" nylon strap in lieu of cable
3. **OPERATOR**
Side mount shown
Top and front mounts are also available
4. **GUIDE COVERS**
Slip-on design with no visible fasteners, powder coated in Matte Black finish
5. **VINYL WEATHER SEAL**
Clips onto guide channel
ASTM E283 Air Leakage Rating
6. **MANUAL LOCK**
Integrated into guide cover (1 per guide)
7. **SECTIONS**
Clear anodized aluminum (standard)
8. **HEADER CHANNEL**
For top seal contact, cable management and installation tool
9. **HEAD PLATES**
Powder coated in Matte Black finish
10. **TOP SEAL**
Mounts to top section
11. **SHAFT COUPLER**



OPERATION AND STRUCTURAL REQUIREMENTS

Motor operation required.

The standard VertiStack operator includes an auxiliary hand chain for emergency use only. This product is supported by a guide assembly attached to the jamb construction. Header support is required for mounting counterbalance system as would be required with any standard sectional door. Adding an optional hood to a wider door may require hood supports.

For interior mount only.

AVAILABLE OPTIONS

- A variety of glass and acrylic panels are available, including tempered, insulated, frosted and Low-E options available in thicknesses of 1/8", 1/4", 1/2" and 5/8"
- Anodized finishes: Clear, Black, Bronze, Dark Bronze
- Paint finishes: Chocolate, White and Bronze
- Polyurethane insulated rails and stiles (VS904U)

AVAILABLE SAFETY FEATURES

- Photo eye sensors (concealed by guide covers)
- Wireless sensing edge (only available on doors over 53" high)
- UL325 Compliant Light Curtain
- Strap brake safety system

CERTIFICATIONS AND LISTINGS

- ±25 PSF Design Pressure – WindCode® W4 (doors up to 14'6" wide only)
- Florida Product Approval #FL42132
- Meets ASHRAE® 90.1, Title 24 and IECC® (International Energy Conservation Code) 2021 Section C406.9 Air Infiltration requirements with an independently tested value of 0.2 cfm/ft²



EXTREME SERIES

POWERED BY **LiftMaster**

COMPLETE EXTREME SERIES
DOOR SYSTEM INCLUDES:

CLOPAY COMMERCIAL DOOR

HEAVY DUTY COMPONENTS

DIRECT DRIVE OPERATOR

.....

IDEAL FOR
EMERGENCY SERVICES,
MANUFACTURING,
DISTRIBUTION
AND AUTOMOTIVE
FACILITIES

HIGH PERFORMANCE SECTIONAL DOOR SYSTEM

The Clopay® Extreme™ Series High Performance Sectional Door System boasts an average opening speed of 24" per second, allowing productivity to flourish while also delivering the aesthetic you're looking for. Tandem nylon rollers improve roller life and reduce running noise for smooth, quiet operation while safety stays top of mind with enhanced features such as 3' of light curtain protection, a cable management system and standard cable tension monitors.

- Heavy duty components improve door life and promote smooth, quiet operation.
- Available as an insulated model to control temperature and noise reduction.
- Design pressures (DP) up to 36 PSF depending on door size, configuration and exposure. Models tested 50% greater than DP.
- 2 year/50,000 cycle warranty. *See warranty document for more information.*



EXTREME™ SERIES AVAILABILITY

architectural series:



EX904, EX904U,
EX3728, EX3729, EX3708,
EX3709, EX3208, EX3209,
EX3158, EX3159,

energy series with intellicore:



EX3724, EX3722,
EX3723, EX3721, EX3720,
EX3717, EX3718, EX3715

energy series:



EX3200, EX3213,
EX3211, EX3220, EX3150

Visit clopaycommercial.com for series product details or for more information
reference product spreads throughout this brochure



Model EX304

24 IN/SEC OPENING SPEED

3x
FASTER*

**THAN A TRADITIONAL
SECTIONAL DOOR**

**When compared to a 10' x 10' door with a Logic 5.0™ Operator set to an average of 8" per second*



POWERED BY LIFTMASTER®

The Extreme™ Series High Performance Sectional Door System features a direct drive operator with an opening speed of 24" per second and up to 600 cycles per day. The display's easy-to-read user interface provides ease of limit-setting at floor level and can connect to the operator via Wi-Fi to myQ® Facility.

SAFETY FEATURES



UL325 approved light curtain that reverses the door's downward motion when the beam is broken



Cable tension monitor that mitigates door operation when cable slackening occurs



Optional wireless bottom safety edge that reverses the door's downward motion upon contact with an object

PERFORMANCE REQUIREMENTS

Average Opening Speed	24" per second
Average Closing Speed	15" per second
Daily Duty Cycles	600 cycles/day
Max. Door Weight	1,000 lbs.
Warranted Cycles	600 cycles per day over 2-year warranty period
Drive System	Direct drive

Visit clopaycommercial.com for complete details or for more information scan the code shown



specialty sectional options

ADDITIONAL SECTIONAL DOOR OPTIONS



REPLACEMENT SLAB SOLUTIONS

Replacement slabs feature 1-5/8" (41.3 mm) thick, CFC-free polyurethane insulation with a 14.86 R-value*. A ribbed design and shiplap section joint make it a versatile replacement solution for many commercial service applications.

*Calculated door section R-value is in accordance with DASMA 1105-103.



BREAK-AWAY BOTTOM SECTION

Break-away bottom sections are excellent in high-traffic dock areas where damage to the bottom sections of doors is a common occurrence.



PASS DOOR

Pass doors are fitting for applications where space is too limited for the installation of a standard entry door. They conserve energy by allowing building access via a smaller opening versus the entire sectional door.



EXHAUST PORT

Can be cut into any type of sectional door. Available in 3" (7.6 cm) and 4" (10.2 cm) sizes.



SPRING BUMPERS

Standard on high lift and vertical lift tracks, optional on standard radius and low headroom tracks.



HIGH PERFORMANCE HARDWARE

High performance hardware features 10 gauge end hinges, heavy-duty top bracket and 3" (7.6 cm) sealed roller with 5/8" (15.9 mm) stem.



REMOVABLE CENTER MULLION

For openings that are wider than standard door width, consider using a carry-away, roll-away or swing-up mullion that enables two or more doors to close one opening.



CONTROLGARD® SD CHAIN HOIST

Hand chain hoist with an integral braking system providing controlled descent for sectional doors.



EXTENDED 8-YEAR HARDWARE WARRANTY

Offers an 8-year limited warranty on all on-door hardware. Upgrades include 11 gauge hinges and 3" (76.2 mm) track.



ADAPTER RAILS

Shiplap to tongue-and-groove. 16' (4.9 m) length prepainted Standard White.
2" (50.8 mm) tongue-and-groove to tongue-and-groove. 16'2" (4.9 m) length prepainted Standard White or Chocolate.



GLAZING MATERIAL OPTIONS – SECTIONAL DOORS

ARCHITECTURAL SERIES STEEL FULL-VIEW, ENERGY SERIES WITH INTELICORE, ENERGY SERIES AND INDUSTRIAL SERIES



Clear Glass



Frosted Glass



Obscure Glass



Narrow Reed Glass



Clear Acrylic

Tempered glass options available.

For full-view glass options, see Architectural Series Aluminum Full-View Door pages 7 and 9.

IMPACT WINDOW OPTIONS

ARCHITECTURAL SERIES STEEL FULL-VIEW AND ENERGY SERIES WITH INTELICORE



Clear Polycarbonate



Bronze Polycarbonate



Matte
Polycarbonate



Pebble
Polycarbonate

COLOR OPTIONS – SECTIONAL DOORS



*Additional charges apply
Due to the painting process, colors may vary

AVAILABILITY	Standard White	Almond	Desert Tan	Sandtone	Commercial Tan	Bronze	Chocolate	Mocha Brown	Hunter Green	Gray	Charcoal	Black	Trinar® White	Trinar® Beige	Lustra™ Black	Lustra™ Charcoal	Lustra™ Silver
ARCHITECTURAL SERIES	3158, 3159	■	■	■		■	■	■		■	■	■	■				
	3208, 3209	■					■	■		■	■	■					
	3708, 3709	■	■	■			■	■		■	■	■	■				
	3728, 3729	■	■	■	■		■	■		■	■	■	■			■	■
INDUSTRIAL SERIES WITH INSULATION	3715	■				■	■	■		■	■	■					
	3717, 3718	■				■	■	■		■	■	■	■	■			
	3720	■				■	■	■		■	■	■	■	■			
	3722	■					■	■		■	■	■					
	3723, 3721	■	■	■	■		■	■		■	■	■					
	3724	■				■	■	■		■	■	■	■	■			
	3730	■					■	■		■	■	■					
EXTerior SERIES	3150	■				■	■	■		■	■	■					
	3200	■				■	■	■		■	■	■					
	3220	■					■	■		■	■	■					
	3154, 3155	■	■	■	■		■	■		■	■	■					
INDUSTRIAL SERIES	3211, 3213	■	■	■	■		■	■		■	■	■	■	■			
	525, 525V, 525S	■					■	■		■	■	■					
	524, 524V, 524S	■				■	■	■		■	■	■					
	522, 522S	■					■	■		■	■	■					
	520, 520S	■					■	■		■	■	■					
	664, 664V	■	■	■	■		■	■		■	■	■					

For Models 904/904U color availability please refer to page 7, for Models 905/905U/906/906U color availability please refer to page 9.

CUSTOM PAINT OPTION

Color Blast® finish offers more than 1,500 Sherwin-Williams® color options to complement your building's color scheme. The resilient, two-part polyurethane-based paint system is specially formulated for excellent adhesion and stability on steel, aluminum, vinyl and plastics. This provides a high-quality, durable and professional finish for your garage door.

- Available on most sectional steel, overlay and aluminum commercial door models. (Not available on flush models 522 and 522S, commercial pass doors and breakaway bottom sections.)
- Backed by a five-year warranty.
- Meets American Architectural Manufacturing Association 2604 standards.
- Solar reflective paint technology results in lower surface temperatures compared with standard paints and may be required on some products to allow darker colors to be used.
- Provide the Sherwin-Williams® 4-digit color code to get started with your match.

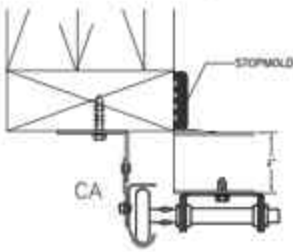
Some colors may not be available as an exact match. These include, but are not limited to, some bright colors such as reds, blues and greens required in solar reflective formulation, metallic colors or non-solid colors like woodgrains.

For more information visit: www.clopaydoor.com/colorblast

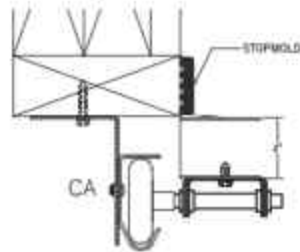


FRAMING AND TRACK OPTIONS

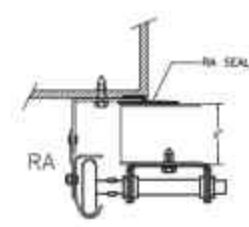
JAMB TYPES *(shown from above)*



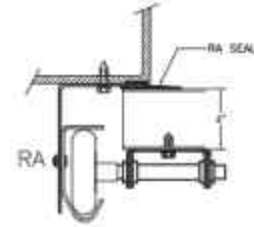
2" WOOD JAMB



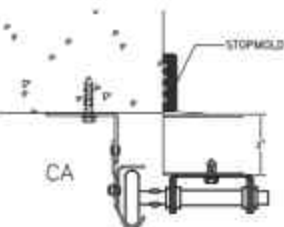
3" WOOD JAMB



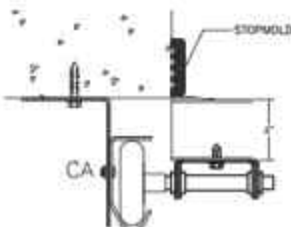
2" STEEL JAMB



3" STEEL JAMB

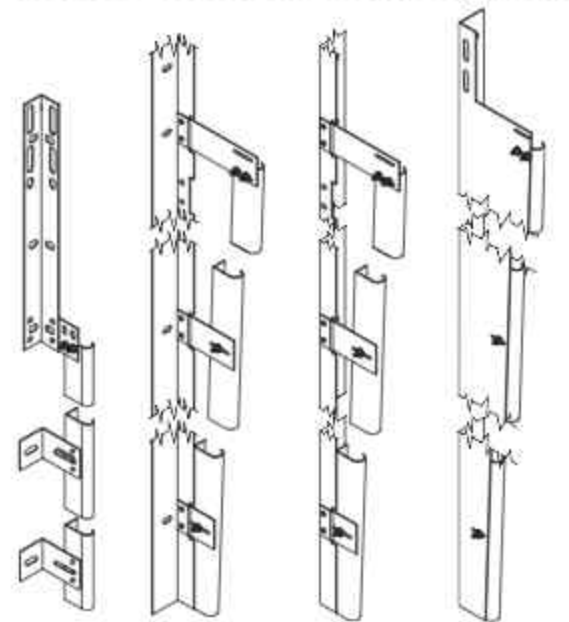


2" MASONRY JAMB



3" MASONRY JAMB

VERTICAL TRACK MOUNTING OPTIONS



2" BRACKET MOUNT

2" OR 3" CLIP MOUNT CONTINUOUS ANGLE

2" OR 3" CLIP MOUNT REVERSE ANGLE

3" FULL TAPERED REVERSE OR CONTINUOUS ANGLE

HIGH CYCLE SPRINGS



25,000, 50,000 or 100,000 cycle springs available.

STANDARD RADIUS



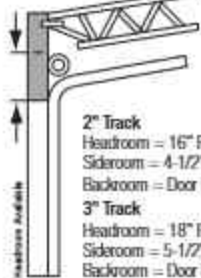
2" Track
 Headroom:
 12" Radius = 14-1/2" Required
 15" Radius = 16" Required
 Sideroom = 4-1/2" Required
 Backroom = Door Height + 23" Required
 3" Track
 Headroom = 18" Required
 Sideroom = 5-1/2" Required
 Backroom = Door Height + 25" Required

HIGH LIFT



High lift equals distance from top of door to bottom of horizontal track.
 2" Track
 Maximum high lift equals headroom available minus 14"
 Sideroom = 4-1/2" Required
 3" Track
 Maximum high lift equals headroom available minus 15"
 Sideroom = 5-1/2" Required
 (Minimum high lift = 12" Required)

ROOF PITCH



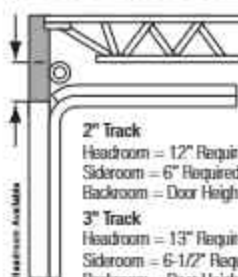
2" Track
 Headroom = 16" Required
 Sideroom = 4-1/2" Required
 Backroom = Door Height + 23" Required
 3" Track
 Headroom = 18" Required
 Sideroom = 5-1/2" Required
 Backroom = Door Height + 25" Required

VERTICAL LIFT



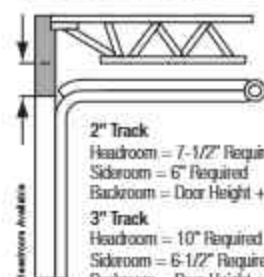
2" Track
 Headroom = Door Height + 12" Required
 Sideroom = 4-1/2" Required
 Backroom = 23" Required
 3" Track
 Headroom = Door Height + 12" Required
 Sideroom = 5-1/2" Required
 Backroom = 23" Required

LOW HEADROOM FRONT MOUNT



2" Track
 Headroom = 12" Required
 Sideroom = 6" Required
 Backroom = Door Height + 23" Required
 3" Track
 Headroom = 13" Required
 Sideroom = 6-1/2" Required
 Backroom = Door Height + 25" Required
 (1,200 lb. limit on door weight)

LOW HEADROOM REAR MOUNT



2" Track
 Headroom = 7-1/2" Required
 Sideroom = 6" Required
 Backroom = Door Height + 30" Required
 3" Track
 Headroom = 10" Required
 Sideroom = 6-1/2" Required
 Backroom = Door Height + 32" Required
 (800 lb. limit on door weight)

HIGH LIFT WITH ROOF PITCH



2" Track
 Amount of High Lift + 15"
 Headroom = 16" Required
 Sideroom = 4-1/2" Required
 3" Track
 Amount of High Lift + 18"
 Headroom = 18" Required
 Sideroom = 5-1/2" Required

Headroom - Top of door to nearest obstruction (truss)

Up to 4" of additional headroom may be required for a trolley door opener.

Note: These are general headroom requirements. Additional headroom may be required depending on door type, door height, drums, spring type or other options selected.

rolling steel series

ROLLING SERVICE DOORS

- Requires minimal maintenance for the lifespan of the door due to the sturdy-commercial grade construction.
- Provide security against entry as well as weather protection in a variety of industrial and commercial applications.
- Incorporate guides, bottom bars and headplates that are powder-coat finished for enhanced aesthetics and increased durability.
- Feature galvanized steel, aluminum or stainless steel finishes.
- Operate manually with hand-chain, hand-crank, or push-up; motor options are also available.



SECURITY GRILLES

- Separate and secure designated spaces while maintaining airflow and visibility.
- Maximize the use of the interior space; curtain sits in a compact coil at the head of an opening.
- Built to order; available in a straight or brick pattern; flame-retardant glaze with polycarbonate protection is also optional.
- Offer low lifecycle cost due to the use of quality materials and heavy-duty construction.
- Finishes include polished stainless and anodized aluminum in a clear or colored anodized finish, adding beauty as well as security to the interior or exterior of a building.

GRILLE PATTERNS



Straight Pattern Grille
(2' x 3', 2' x 6', 2' x 9')



Brick Pattern Grille

rolling steel series

COUNTER SHUTTERS

- An ideal choice for service openings: cafeterias, stadiums, arenas, hospitality and healthcare offices.
- Built to exact opening specifications using compact guides, slats, brackets and hood, they provide a sleeker look than traditional rolling doors.
- Offer a custom appearance (with no exposed edges) and fast installation; slip-in units arrive ready to be set into existing walls.
- Operate manually with hand-chain, hand-crank, or push-up; motor options are also available.
- Concealed tubular motors provide a space-saving design option for dimensional limitations.



FIRE-RATED DOORS AND SHUTTERS

- Manufactured to the stringent qualities of full-duty service doors, yet easily meet the most up-to-date fire protection standards.
- Operational choices include fail-safe, motor-operated systems, hand crank (manual) and standard chain hoist operated systems.
- Custom-built to exact opening specifications; UL labeled for up to 3 hours.
- Curtains are available in 22 gauge galvanized steel with optional powder coating; also available in 22 gauge 300 series stainless steel; galvanized steel endlocks are provided per UL procedure.

rolling steel series

ROLL-UP SHEET DOORS

Clopay Roll-Up Sheet Doors are low maintenance, have a long lasting finish and are designed for easy installation. These doors are ideal for mini-warehouse and storage facilities.

LOW MAINTENANCE WITH LASTING FINISH

- 26 gauge (24 for W8 WindCode® rating) hot-dipped galvanized steel curtain with a baked-on silicone polyester finish inside.
- Hot-dipped galvanized steel, roll-formed guides (18 gauge 150C, 16 gauge 155C, 156C, 157C and 12 gauge 160C).
- Self-lubricating wear strips on curtain prevent metal-to-metal contact, providing quieter operation.
- Heavy-duty bottom bar withstands the external elements.
- Full bulb bottom weather-strip helps ensure proper fit along irregular floors.

DESIGN OPTIONS

- Multiple color options.

PEACE OF MIND

- Forty-year chalking warranty, twenty-five year anti-fade warranty.
- Three-year hardware warranty (150C), one-year hardware warranty (155C, 156C, 157C, 160C).



CORRUGATED PANEL DESIGN

26 or 24 gauge steel, roll formed from ASTM A653 grade 80 full hard steel, interlocked and seamed together to make a continuous curtain for full height of door. *Model 157C shown.*



Model 157C, Roll-Up Sheet Door

COLOR OPTIONS – ROLL-UP DOORS

Bronze	Cedar Red	Continental Brown	Desert Sand	Desert Tan
High Gloss White	LG (Forest) Green	Light Stone	Sandstone	Satin White
Silhouette Gray	AG Galvalume	Colony Green	Charcoal Gray	Evergreen
Fern Green	Polar Blue	Royal Blue	Smart Blue	Sunset Orange
Teal	Ultra Marine Blue	Patriot Red	Sierra Sunset	Valentine Red
EXR Wasabi	Apple Lime Cocktail	Dark Teal	Maroon	Safety Yellow
LS Yellow	Coal Black*			

**Additional charges apply.*

Due to the printing process, colors may vary. Color availability may vary on WindCode® models.

All colors are backed by a 30m integrity warranty for 40 years guaranteed to hold up against cracking, chalking or peeling. In addition, these colors are guaranteed not to chalk or fade for 25 years.

COMMERCIAL OPERATORS

LiftMaster

GARAGE DOOR OPENERS



Clopay offers a full line of commercial openers designed to fit most applications.

- Jackshaft and trolley-driven openers to meet design and power requirements.
- Latest technology including MyQ® Technology to monitor or control the operator with Wi-Fi and smart phone capabilities.
- Available for single or three-phase power.
- Belt driven or gear driven to meet your specification requirements.
- Solenoid brakes are available on most models.
- Full line of safety equipment and accessories.

ACCESSORIES



- Sensing edges.
- Red/green traffic lights.
- Loop detectors.
- Damp environment/corrosion resistant modification.
- Many other modifications and accessories to meet your project requirements.

WINDCODE®

Clopay has been at the forefront of code compliant sectional door products for decades. From research and development to design assistance, Clopay is your source for WINDCODE® products. Clopay offers a variety of wind-loaded products in many different sizes and pressure ratings. Our continued emphasis on this important issue puts Clopay ahead of the competition.



Some of the benefits Clopay offers include:

- Professional engineering staff.
- Design recommendations.
- In-house testing facilities.
- Third-party independent testing verifications.
- Construction industry approvals: South Florida, Standard Building Code Congress, Texas Department of Insurance, North Carolina Building Code Council.
- In-house research and development at Clopay Building Products Technical Center in Cincinnati, Ohio.
- Dedicated building code product manager on staff.

architectdoorhelp.com

ARCHITECT RESOURCE GUIDE FOR GARAGE DOORS

Our Architect Portal is your go-to source for all the technical materials you need to support your next garage door project. You'll find residential and commercial overhead door resources like specifications, data sheets, a BIM library, and a custom drawing generator all in one place.

Clopay
CORPORATION

ARCHITECT PORTAL

Home | Meet the Team | Commercial Download Library | Residential Download Library | Sectional Doors | Rolling Doors | Blog | Call Today! 888.707.3682

Need Help? Click Here!

STEEL INSULATED FULL VIEW DOORS

LEARN MORE

NEED THE RIGHT DOOR? WE CAN HELP!

- Commercial Sectional Doors**
- Residential Sectional Doors**
- Rolling Doors**
Know which rolling door you want? Browse our commercial rolling doors.

Product Selection Tool | Select a Color Design Request | Technical Questions

Residential Download Library | Commercial Download Library | Rolling Door Drawing Generator

NEED HELP?

We offer free expert advice on new or challenging garage door projects. Our Architectural Design Support team and Product Representatives have more than 100 years of combined knowledge and experience to give you the reliable solutions you need. They can help you with every stage of the process, from selecting the best door for an opening to handling custom requests. When you work with our team, you'll get precise product details and expert assistance, saving you time and money on your project.

Clopay
CORPORATION

Clopay

CORNELL

COOKSON

upgrading expectations

Spokane International Airport Snow Removal Equipment Building



COLLABORATIVE DESIGN

Clopay partnered with a Master Authorized Dealer®, Continental Door Company, to design and install 28 commercial doors on Spokane International Airport's (SIA) new \$7.5 million snow removal building. The combination of Model 3722 overhead sectional steel doors and Model 903 full-view aluminum doors contributed to the building's LEED Gold certification and striking appearance.

ENGINEERED SOLUTION

Clopay engineers and the Continental Door team collaborated on designing doors to fit the installation challenges of the uniquely shaped building while delivering a solution that is extremely reliable, safe and efficient. The result is a visually stunning installation that features door hardware on a straight incline in lieu of a breakaway track, a custom staggered hinge scheme and 4' and 6' struts to meet demanding wind load requirements. The ruggedness of the 2" thick premium Model 3722, 20 gauge steel doors ensures low maintenance in an environment that is subjected to high traffic and harsh winter conditions.

CASE STUDY OVERVIEW:

- Location: Spokane, Washington
- Project Size: 46,400 square feet
- Facility Cost: \$7.5 million, LEED Gold certification
- Completion: June 2013
- Architect: Cortner Architectural
- General Contractor: Lydig Construction Inc., of Spokane
- Clopay Garage Door Installer: Continental Door Company

COMMERCIAL DOOR SELECTION CHART

ARCHITECTURAL SERIES (ALUMINUM FULL-VIEW DOORS)									
Model	Steel Emboss	Exterior Skin Pattern	Gauge	Section Thickness	Insulation	Max. Width*	Max. Height*	R-value	U-Factor†
904	-	Aluminum/Glass	-	2-1/8"	-	24'2"	20'0"	-	-
904U	-	Aluminum/Glass	-	2-1/8"	Intellicore® Polyurethane	20'2"	20'0"	3.8	0.73
905	-	Aluminum/Glass	-	2-1/8"	-	22'2"	16'0"	-	-
905U	-	Aluminum/Glass	-	2-1/8"	Intellicore® Polyurethane	20'2"	16'2"	-	-
906	-	Aluminum/Glass	-	2-1/8"	-	22'2"	16'0"	-	-
906U	-	Aluminum/Glass	-	2-1/8"	Intellicore® Polyurethane	20'2"	16'2"	-	-

ARCHITECTURAL SERIES (STEEL FULL-VIEW DOORS)												
Model	Steel Emboss	Exterior Skin Pattern	Gauge	Section Thickness	Insulation	Max. Width*	Max. Height*	R-value‡			U-Factor†	
								Gate	Fully Glazed Insulated Glass	Islet	Fully Glazed Insulated Glass	Fully Glazed Insulated Glass
3158 [§]	Stucco	Flush	27	1-3/8"	Bonded Polystyrene	18'2"	16'0"	6.5	3.4	0.30	0.44	
3158 [§]	Stucco	Minor Ribbed	27	1-3/8"	Bonded Polystyrene	18'2"	16'0"	6.5	3.4	0.30	0.44	
3208 [§]	Stucco	Flush	24	2"	Bonded Polystyrene	20'2"	18'0"	9.1	4.4	0.24	0.45	
3209 [§]	Stucco	Minor Ribbed	24	2"	Bonded Polystyrene	20'2"	18'0"	9.1	4.4	0.24	0.45	
3708 [§]	Stucco	Flush	27	1-3/8"	Intellicore® Polyurethane	18'2"	16'0"	12.9	5.9	0.21	0.40	
3709 [§]	Stucco	Minor Ribbed	27	1-3/8"	Intellicore® Polyurethane	18'2"	16'0"	12.9	5.9	0.21	0.40	
3728 [§]	Stucco	Flush	27	2"	Intellicore® Polyurethane	20'2"	18'0"	18.4	8.0	0.19	0.39	
3729 [§]	Stucco	Minor Ribbed	27	2"	Intellicore® Polyurethane	20'2"	18'0"	18.4	8.0	0.19	0.39	

ENERGY SERIES WITH INTELICORE									
Model	Steel Emboss	Exterior Skin Pattern	Gauge	Section Thickness	Insulation	Max. Width*	Max. Height*	R-value	U-Factor†
3715 [§]	Stucco	Minor Ribbed	27	1-3/8"	Intellicore® Polyurethane	18'2"	16'0"	12.9	0.21
3717 [§]	Stucco	Minor Ribbed	27	1-3/4"	Intellicore® Polyurethane	32'2"	26'0"	16.2	0.21
3718 [§]	Stucco	Flush	27	1-3/4"	Intellicore® Polyurethane	32'2"	26'0"	16.2	0.21
3720 [§]	Stucco	Minor Ribbed	27	2"	Intellicore® Polyurethane	40'2"	26'0"	18.4	0.19
3721 [§]	Woodgrain	Flush	27	2"	Intellicore® Polyurethane	24'2"	18'0"	18.4	0.19
3722 [§]	Stucco	Flush	20	2"	Intellicore® Polyurethane	40'2"	26'0"	18.4	0.19
3723 [§]	Woodgrain	Raised Panel	27	2"	Intellicore® Polyurethane	24'2"	18'0"	18.4	0.19
3724 [§]	Stucco	Minor Ribbed	24	2"	Intellicore® Polyurethane	40'2"	26'0"	18.4	0.19
3730 [§]	Stucco	Minor Ribbed	27	3"	Intellicore® Polyurethane	30'2"	18'0"	27.2	0.16

ENERGY SERIES									
Model	Steel Emboss	Exterior Skin Pattern	Gauge	Section Thickness	Insulation	Max. Width*	Max. Height*	R-value	U-Factor†
3150 [§]	Stucco	Minor Ribbed	27	1-3/8"	Bonded Polystyrene	14'0"	14'0"	6.5	0.30
3154 [§]	Woodgrain	Raised Panel	27	1-3/8"	Bonded Polystyrene	18'2"	14'0"	6.5	0.30
3155 [§]	Woodgrain	Flush	27	1-3/8"	Bonded Polystyrene	18'2"	16'0"	6.5	0.30
3200 [§]	Stucco	Minor Ribbed	24	2"	Bonded Polystyrene	18'0"	18'0"	9.1	0.24
3213 [§]	Woodgrain	Raised Panel	24	2"	Bonded Polystyrene	18'2"	14'0"	9.1	0.24
3211 [§]	Woodgrain	Flush	24	2"	Bonded Polystyrene	24'2"	18'0"	9.1	0.24
3220 [§]	Stucco	Flush	20	2"	Bonded Polystyrene	24'2"	18'0"	9.1	0.24

INDUSTRIAL SERIES									
Model	Steel Emboss	Exterior Skin Pattern	Gauge	Section Thickness	Insulation	Max. Width*	Max. Height*	R-value	U-Factor†
520 (S)	Smooth	Minor+Deep Ribs	20	2"	Polystyrene or Non-insulated	24'2"	18'0"	6.6**	0.37**
522 (S)	Smooth	Flush	20	2"	Polystyrene or Non-insulated	24'2"	24'0"	6.6**	0.37**
524 (S,V)	Smooth	Minor+Deep Ribs	24	2"	Polystyrene or Non-insulated	24'2"	18'0"	6.6**	0.37**
525 (S,V)	Smooth	Minor+Deep Ribs	25	2"	Polystyrene or Non-insulated	14'2"	18'0"	6.6**	0.37**
664 (V)	Woodgrain	Raised Panel	24	2"	Polystyrene or Non-insulated	16'2"	14'0"	6.3**	0.37**

ROLLING STEEL DOORS									
Service Doors									
Model	Description	Insulation	Gauge	R-value	Slab Material				
CESD10	Heavy Duty Service Door	Non-insulated	18 to 24	-	Aluminum, Galvanized or Stainless Steel				
CESD20	Heavy Duty Service Door	Insulated	18 to 24	8.1	Aluminum, Galvanized or Stainless Steel				
CERD10	Heavy Duty Fire Rated Service Door	Non-insulated	18 to 22	-	Galvanized Steel or Stainless Steel				
CERD11	Heavy Duty Fire & Smoke Rated Service Door	Non-insulated	18 to 22	-	Galvanized Steel or Stainless Steel				
CERD20	Heavy Duty Fire Rated Service Door	Insulated	18 to 22	8.1	Galvanized Steel or Stainless Steel				
CERD21	Heavy Duty Fire & Smoke Rated Service Door	Insulated	18 to 22	8.1	-				

Security Grilles									
Model	Description	Pattern	Material						
CEG10	Rolling Grille	Standard	Stainless Steel or Galvanized Steel						
CEG11	Lexan™ Glazed Rolling Grille	Lexan™	Stainless Steel or Galvanized Steel						
CEG12	Rolling Grille	Brick	Stainless Steel or Galvanized Steel						
CEG30	Side Folding (accordion) Grille	Standard (9", 6" or 3" wide by 2" high)	Aluminum						
CEG31	Side Folding Lexan™ or Solid Grille	Solid or Lexan™	Aluminum						

Counter Doors									
Model	Description	Insulation	Gauge	R-value	Slab Material				
CESC10	Standard Counter Door	-	18 or 22	-	Aluminum, Galvanized or Stainless Steel				
CESC20	Standard Counter Door with Integral Frame	-	18 or 22	-	Aluminum, Galvanized or Stainless Steel				
CERC10	Standard Fire Rated Counter Door	-	22	-	Galvanized or Stainless Steel				
GERC20	Standard Fire Rated Counter Door with Integral Frame	-	22	-	Galvanized or Stainless Steel				

Rolling Sheet Doors									
Model	Description	Insulation	Coating Gauge	Coil	Material				
150C	Light Duty	Available	26	9"	Galvanized Steel				
155C	Medium Duty	Available	26	12"	Galvanized Steel				
156C	Medium Duty	Available	26	12"	Galvanized Steel				
157C	Medium Duty	Available	26	12"	Galvanized Steel				
160C	Heavy Duty	Available	26	12"	Galvanized Steel				

*All widths may not be available in all heights. Consult the factory for more details. **For insulated models (S, V) only.

†Cloop complies with the 2015 IECC (International Energy Conservation Code) with an air infiltration rating of .40 cfm/ft² or less (IECC, Section 402.5.2), and also meets the U-factor requirement of .37 or less (IECC, Section C-402.4, for Climate Zones 1 through 8).

‡R-value is impacted by the number of windows and window type per section.

§Tested door U-Factor is in accordance with DASMA 105.

COMMERCIAL SYSTEM SELECTION CHART

STACKING SERIES – VERTISTACK® COMPACT VERTICAL STACKING SECTIONS

ARCHITECTURAL SERIES (ALUMINUM FULL-VIEW DOORS)

Model	Steel Emboss	Exterior Skin Pattern	Gauge	Section Thickness	Insulation	Max. Width*	Max. Height*	R-value	U-Factor†
VS904	-	Aluminum/Glass	-	2-1/8"	-	20'0"	14'0"	-	-
VS904U	-	Aluminum/Glass	-	2-1/8"	Intellifore® Polyurethane	20'0"	14'0"	-	-

EXTREME™ SERIES – HIGH PERFORMANCE SECTIONAL DOOR SYSTEM

ARCHITECTURAL SERIES (ALUMINUM FULL-VIEW DOORS)

Model	Steel Emboss	Exterior Skin Pattern	Gauge	Section Thickness	Insulation	Max. Width*	Max. Height*	R-value	U-Factor†
EX904	-	Aluminum/Glass	-	2-1/8"	-	16'2"	14'0"	-	-
EX904U	-	Aluminum/Glass	-	2-1/8"	Intellifore® Polyurethane	16'2"	14'0"	3.8	0.73

ARCHITECTURAL SERIES (STEEL FULL-VIEW DOORS)

Model	Steel Emboss	Exterior Skin Pattern	Gauge	Section Thickness	Insulation	Max. Width*	Max. Height*	R-value‡		U-Factor†	
								Steel	Fully Closed Insulated Glass	Steel	Fully Closed Insulated Glass
EX3158	Stucco	Flush	27	1-3/8"	Bonded Polystyrene	16'2"	14'0"	6.5	3.4	0.30	0.44
EX3159	Stucco	Minor Ribbed	27	1-3/8"	Bonded Polystyrene	16'2"	14'0"	6.5	3.4	0.30	0.44
EX3208	Stucco	Flush	24	2"	Bonded Polystyrene	16'2"	14'0"	9.1	4.4	0.24	0.45
EX3209	Stucco	Minor Ribbed	24	2"	Bonded Polystyrene	16'2"	14'0"	9.1	4.4	0.24	0.45
EX3708	Stucco	Flush	27	1-3/8"	Intellifore® Polyurethane	16'2"	14'0"	12.9	5.9	0.21	0.40
EX3709	Stucco	Minor Ribbed	27	1-3/8"	Intellifore® Polyurethane	16'2"	14'0"	12.9	5.9	0.21	0.40
EX3728	Stucco/Smooth	Flush	27	2"	Intellifore® Polyurethane	16'2"	14'0"	18.4	8.0	0.19	0.39
EX3729	Stucco/Smooth	Minor Ribbed	27	2"	Intellifore® Polyurethane	16'2"	14'0"	18.4	8.0	0.19	0.39

ENERGY SERIES WITH INTELLICORE

Model	Steel Emboss	Exterior Skin Pattern	Gauge	Section Thickness	Insulation	Max. Width*	Max. Height*	R-value	U-Factor†
EX3715	Stucco	Minor Ribbed	27	1-3/8"	Intellifore® Polyurethane	16'2"	14'0"	12.9	0.21
EX3717	Stucco	Minor Ribbed	27	1-3/4"	Intellifore® Polyurethane	16'2"	14'0"	16.2	0.21
EX3718	Stucco	Flush	27	1-3/4"	Intellifore® Polyurethane	16'2"	14'0"	16.2	0.21
EX3720	Stucco	Minor Ribbed	27	2"	Intellifore® Polyurethane	16'2"	14'0"	18.4	0.19
EX3721	Woodgrain	Flush	27	2"	Intellifore® Polyurethane	16'2"	14'0"	18.4	0.19
EX3722	Stucco	Flush	20	2"	Intellifore® Polyurethane	16'2"	14'0"	18.4	0.19
EX3723	Woodgrain	Raised Panel	27	2"	Intellifore® Polyurethane	16'2"	14'0"	18.4	0.19
EX3724	Stucco	Minor Ribbed	24	2"	Intellifore® Polyurethane	16'2"	14'0"	18.4	0.19

ENERGY SERIES

Model	Steel Emboss	Exterior Skin Pattern	Gauge	Section Thickness	Insulation	Max. Width*	Max. Height*	R-value	U-Factor†
EX3150	Stucco	Minor Ribbed	27	1-3/8"	Bonded Polystyrene	16'2"	14'0"	6.5	0.30
EX3200	Stucco	Minor Ribbed	24	2"	Bonded Polystyrene	16'2"	14'0"	9.1	0.24
EX3211	Woodgrain	Flush	24	2"	Bonded Polystyrene	16'2"	14'0"	9.1	0.24
EX3213	Woodgrain	Raised Panel	24	2"	Bonded Polystyrene	16'2"	14'0"	9.1	0.24
EX3220	Stucco	Flush	20	2"	Bonded Polystyrene	16'2"	14'0"	9.1	0.24



Model 3720, Shown in Lustre™ Silver Finish with Full-View Lines

Model 3372, Shown with 42" x 16" Lite

finding the right solution

Find Your Solution With Clopay



Our team of Clopay commercial door experts is always ready to assist. To find the Clopay commercial door that's right for your application, visit clopaycommercial.com or architectdoorhelp.com. To locate a dealer go to clopaydoor.com/where-to-buy/commercial or call 1-800-2CLOPAY (225-6729).



© 2024 Clopay Corporation. All rights reserved.

CMDC-IDEA-15_REV0024